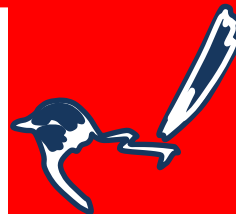


THE LINK

A publication of Rydalmere Public School



397 Victoria Road
Rydalmere 2116

Email: rydalmere-p.school@det.nsw.edu.au
Web: rydalmere-p.schools.nsw.edu.au

Ph: 9638 1568
Fax: 9898 0161

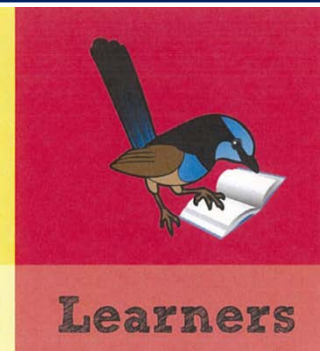
Term 1 – Week 11: Issue 5/2017



Safe



Respectful



Learners

DATES TO REMEMBER

4/5/17	School Assembly
3&4/5/17	M.A.N.G.O Mother's Day Stall
9/5-11/5/17	NAPLAN Yrs 3 & 5
17/5/17	School Cross Country
30/5/17	Zone Cross Country

PRINCIPAL'S REPORT

Welcome to Term 2

Welcome back to a busy Term 2. It has been lovely to see so many smiling faces, happy to be back at Rydalmere PS.

This term we welcome one new family to our school. I know you will make Jerry, Jolan and Jasmine feel very welcome.

Please keep an eye on the calendar as we have many events this term including NAPLAN, cross country, class assemblies and more.

It's **NOT** ok to smoke near a school

The Department's ban on smoking on all school premises and administrative areas is detailed in the Department's 'Drugs in Schools' policy which states that:

"Smoking on school premises, including school buildings, gardens, sports fields and car parks, is prohibited. This includes students, employees, visitors and other people who use school premises, including community groups."



Schools are also governed by legislative requirements under NSW smoke-free laws. The Smoke-free Environment Act 2000 requires enclosed public places to be smoke free. The Act also requires certain outdoor areas to be smoke-free including **within 10m of children's playgrounds, public transport stops and stations, spectator areas of sports grounds and within 4m from an entrance used by pedestrians to get into or out of a building.**

Within the Department, pedestrian access points include areas such as ***school gates where there is limited opportunity for people to avoid second hand tobacco smoke***. NSW Health has processes to ensure compliance with smoking bans, including enforcement activity, compliance monitoring and education and public reporting of outdoor smoking ban breaches.

A \$300 on the spot fine may apply for anyone who fails to comply with the law. Rydalmere PS will be patrolled for the month of May and fines will be issued.

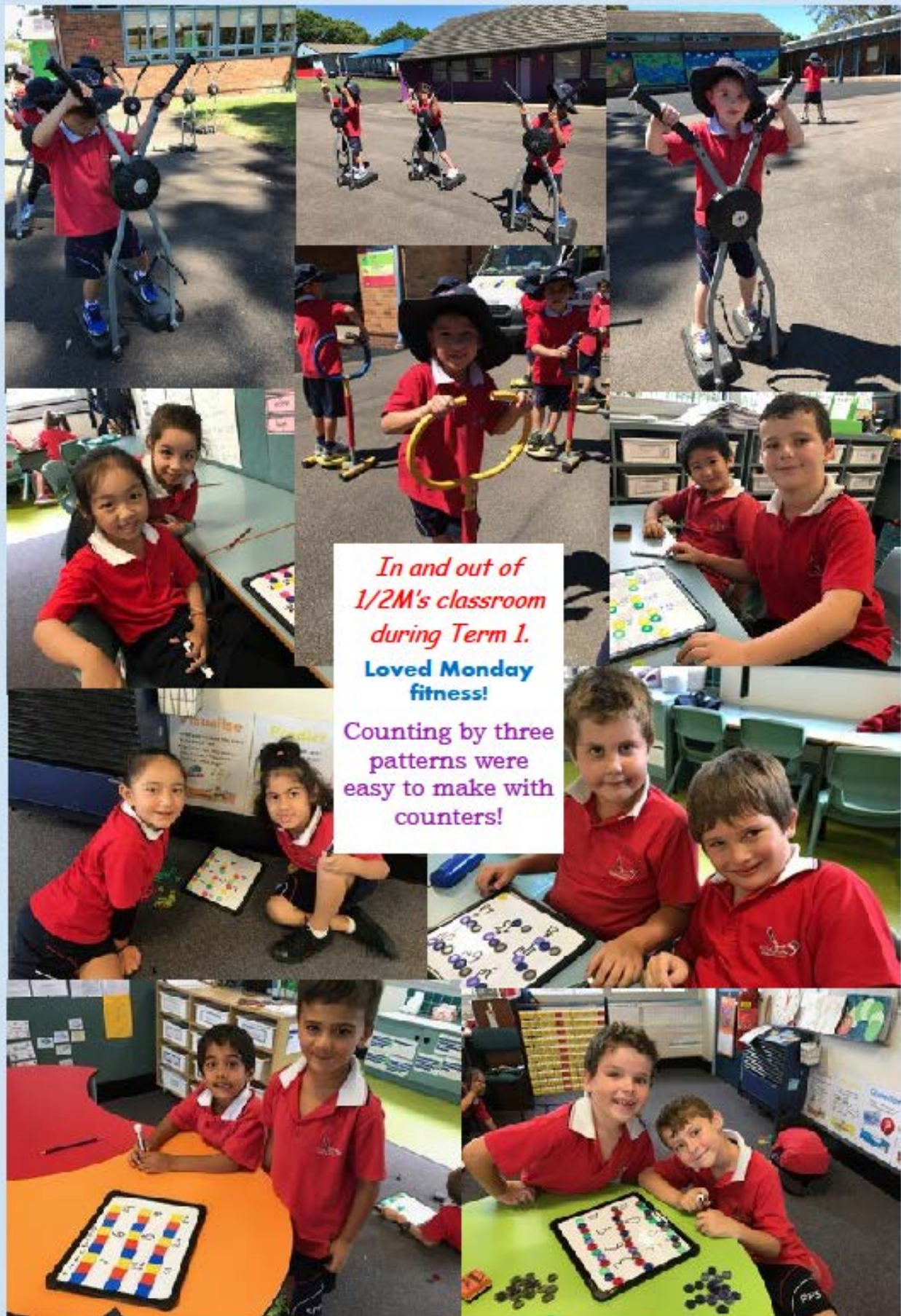
Bek Zadow Principal

ASSEMBLY AWARDS

Term 1 Week 11 - 6/04/2017

			
K Blue	Summer	Abdulla	Alyssa
			Anabella
K Purple	Hana	Aila	William
			Kate
1/2M	Hana	Stephen	Ethan
			Cameron
			Blake
			Jasnoor
2/3A	Zaiin	Aamir	Laily
			Imran
			Mahdi
			Clayton
3/4S	Cooper	Maria	Sejin
			Hilal
			Harith
			Lucas
5/6M	Terry	Emily	Ahmad
			Bilal I
			Bilal S
			Serge

WHAT'S HAPPENING IN 1/2 M



School Banking 2017 is off to a flying start.



This year's School Banking adventure is well underway, as the new-look Dollarmites lead the journey up towards the amazing Savings Hover Park. Students are demonstrating a remarkable saving behaviour.

New reward items for Term 2



There are two new reward items to keep students saving in Term 2: the 3D Chalk Set and Tablet Case. Your child can redeem one of these, while stocks last, after making 10 School Banking deposits.

Modern ways to teach money skills with the CommBank Youth app

Through the School Banking program, CommBank has been offering engaging ways for Australian children to learn the value of saving and smart money management since 1931. In 2017, the introduction of the CommBank Youth app, an innovative digital banking tool, will help enhance the School Banking program.

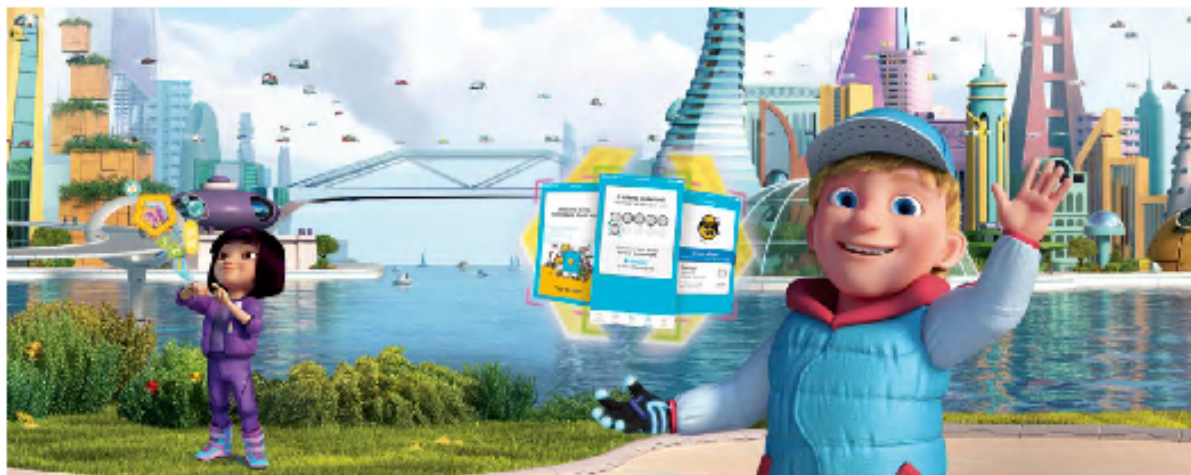
With the CommBank Youth app, your child can:

- Check the balance of their Youthsaver account.
- View School Banking deposits in their transaction history.
- Track the number of Dollarmites tokens they collect.
- Set up savings goals and monitor their progress.
- Create a list of chores they can do to earn pocket money.



Explore more about the CommBank Youth app, and how to get your child started, by visiting commbank.com.au/schoolbankin

Should you have any questions or for more information, feel free to contact the school office or the school banking co-ordinator, Paula Britz, directly on paula.britz@gmail.com or 0420 668 020



RYDALMERE PUBLIC SCHOOL

Learning is Growing



"The Link" Newsletter

The fortnightly newsletter "The Link" is produced electronically. It is available for viewing on the school website: www.rydalmere-p.schools.nsw.edu.au. Please note that "The Link" will no longer be e-mailed.

A print copy will be posted on the notice board outside the Kindergarten room by Tuesday morning.

Alternatively, "The Link" can also be viewed via the **FREE** Rydalmere Public School App. The App will also give you a notification when "The Link" has been published so you will never miss out on all the latest news and events at Rydalmere Public School. This is an excellent way to keep in touch and up to date with class news and dates for your calendar



Should neither of these options meet your needs, please advise the office either by phone or a note and we will arrange for a print copy to be sent to you via your child.

Kind regards,

Bek Zadow
Principal



P&C NEWS

Welcome back to Term 2

UP COMMING EVENTS

Wednesday 3rd and 4th May -and Mother's Day Stall

Thursday 17th May – P&C Meeting 7:00pm.

Saturday 24th June- Bunnings BBQ.

Why do P&C?

Most schools have a parent representative body, commonly called Parents and Citizens (P&C) Association in state schools or a Parents and Friends (P&F) Association in non-government. Committee meetings are usually held once a month. Any parent or guardian can attend.

Parent members are a great way to:

- Get the inside story on what's really happening in the school.
- The principal always is available to answer questions and teachers sometimes attend too.
- Contribute to the school's resources through various fundraising projects.
- have a say in the development of school activities such as excursions and camps and curriculum.
- Meet other parents.

All money raised by a parent committee must be used for the benefit of the school. But as a member, you get to vote on how funds are used—and ultimately, that can only benefit your child too.

*Why not come and see what we can achieve together. Join Rydalmere Public School P&C or volunteer at our next fundraising event. **Next P&C Meeting – 18th May**, in the school Library. Please arrive at 6.45pm for a 7:00pm start. **"We will be waiting for you" 😊***



**P& C Annual Mothers/M.A.N.G.O Stall is on
Tuesday 3rd May & Thursday 4th May**

Gifts range from \$1.00 to \$7.00.

Please support the stall by giving your children some money to purchase that special gift.

If anyone can help out at the stall on Wednesday morning or Thursday morning please let Davina (mum of Willow, Connor, Summer- Kindy,) or Dee (mum of Ayla Kindy), or Maryanne (mum of Amelia, Jack & Nicholas).

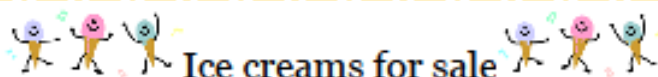
Please note Mothers day is on Sunday 14th May.

Uniform shop

New price for Tracksuit is: \$75.

The uniform shop is open by appointment or every First Thursday of the month, in the morning between 8:50 and 9:15.

If your child has grown out of their school uniform, why not donate it to the uniform shop. All money raised from the sale of uniforms is donated back to the school to help supply resources and equipment that government funding does not cover.



Icy twists \$1.00
Juicys 50c
Zooper doopers 50c
Chocolate paddle Pops \$1.30
Banana paddle Pops \$1.30
Rainbow Paddle pops \$1.30



CANTEEN

Canteen is opened every **TUESDAY** and **FRIDAY**, for **LUNCH ORDERS ONLY**.

Keep an eye, and ear, out for special days, the canteen will be opened, and special menu items.

Volunteers are needed to open the Canteen on other days.

(If you are able to spare a few hours one day, please let Nichole know).



Rydalmere Public School is catering to your children's needs from birth through to year 6.

Playgroup for children from birth to Kindy runs in the hall on Mondays from 9:30 to 11:30.

Come along and meet locals with similar aged children, have a play, do some craft, sing songs and a story and weather permitting play outside in the Pre School outdoor area.

For more information see Jo-Anne in the school playground, contact the office, email rydalmerepublicschoolplaygroup@hotmail.com or rydalmerepublicschoolplaygroup.weebly.com

COMMUNITY NEWS

Clement Art School

www.clementart.com.au

Epping, Eastwood, Chatswood, Burwood,
Hurstville, Hornsby, Parramatta, Killara

Craft

Drawing



Creative Art

clay

Painting

Sketching



Email us if telephone line is not be connected

Tel: 0414435388

email: clementartschool@hotmail.com

EPPING Shop 12, 74 Rawson Street (G/F)

BURWOOD Shop 4, 181 Burwood Rd (G/F)

EASTWOOD Suite 9, 225 Rowe St (level 1)

HORNSBY Suite 4, 169 Pacific Hwy (level 1)

PARRAMATTA 4/105 Church Street (level 2)

HURSTVILLE Suite 8, 123 Forest Rd (level 1)

KILLARA Suite J, 680 Pacific Highway (level 1)

CHATSWOOD Shop 75, Oscar St (level 1)

**Narang Bir-Rong is
looking for Aboriginal
foster carers.**



**Providing Aboriginal Foster Care
& Kinship Care since 2008.**

Narang Bir-rong recruits, trains and supports Aboriginal foster carers and case manages children and young people in out of home care. Narang Bir-rong places Aboriginal children and young people in care situations that support their individual identity and self-esteem and that meet their social, emotional and behavioural needs.

Narang Bir-rong is urgently looking for more Aboriginal carers right now. If you would like to know more or are interested in becoming a carer please contact us.

Narang Bir-Rong
Penrith Children's Family Centre



Like us on Facebook
facebook.com/narangbirrong

Phone: (02) 4729 1677
Website: narangbirrong.org.au



**Barnardos
Australia**

ABN 18 058 057 906 | A Company Limited by Guarantee | Registered Charity | Models used for privacy | PE_15_00222