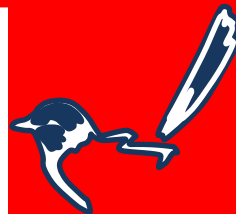


THE LINK

A publication of Rydalmere Public School



397 Victoria Road
Rydalmere 2116

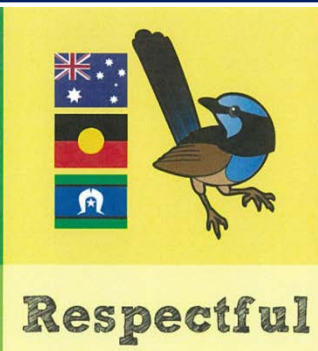
Email: rydalmere-p.school@det.nsw.edu.au
Web: rydalmere-p.schools.nsw.gov.au

Ph: 9638 1568
Fax: 9898 0161

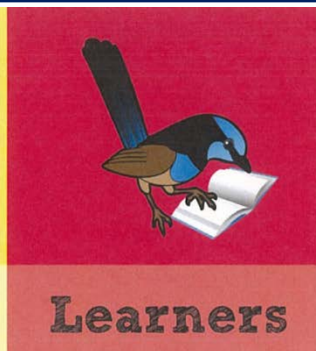
Term 2 – Week 4: Issue 7/2019



Safe



Respectful



Learners

DATES TO REMEMBER

Wednesday	Fundamental Movement Skills Hip Hop Dance Group
20/5/19	School Photos – Whole School & Preschool Green Group
22/5/19	National Simultaneous Storytime
28/5/19	Zone Cross Country

3/7/19	School Athletics Carnival

PRINCIPAL'S REPORT

NAPLAN

Our Year 3 and Year 5 students completed their NAPLAN assessments last week. The areas tested were language conventions, writing, reading comprehension and numeracy. This year, for the first time, we were required to participate in NAPLAN online. With the exception of Year 3 Writing, all assessments were completed on the online platform. The results will be released in late Term 3. All staff at Rydalmere are proud of the resilience and maturity our Year 3 and Year 5 students demonstrated as they tried their best during the testing period. As Principal, I am so proud of our students for their effort.

Cross Country

On Thursday 16 May, we held our annual Cross Country Carnival. All students K-6 participated in the event and showed great sportsmanship!! Students who have qualified for the Parramatta/Merrylands Zone Carnival on 28 May will be notified shortly. We would like to congratulate all students for their effort.

Walk to School Safely Day

On Friday 17 May we participated in Walk to School Safely Day. This year, we saw the return of our Walking School Bus. Thank you to our Community Hub Leader Seetha for organising this initiative. We encourage parents and carers to join their children in 'walking to school' which promotes road safety and healthy lifestyle every day, not just on this special day.



What a wonderful thing to walk in the beautiful morning.... our walking school bus was full.... Thanks heaps to all those who joined us today.



Staff Car Park

For the safety of all of our students, I would like to kindly remind parents and carers that the John Street car park is for staff only. Please do not turn into the driveway or attempt to drive in to the car park to drop off or pick up your child. No child or parent/carer should walk through this car park either to access the school. We have pedestrian gates with paths as access points at both John Street and Victoria Road for this purpose. Keeping our students safe is our highest priority and I ask all caregivers to assist us with this.

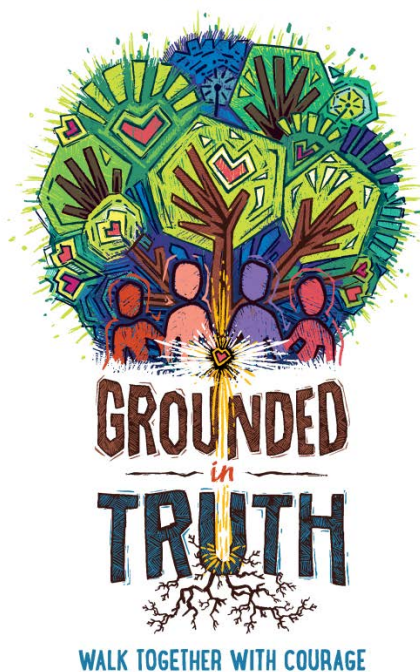


National Reconciliation Week

From 27 May to 3 June, we will acknowledge National Reconciliation Week. Sunday 26 May is National Sorry Day. Our students will participate in lessons on how Australians can better recognise the contributions, cultures and histories of Aboriginal and Torres Strait Islander people. This is in addition to the content already studied across all curriculum areas.

The theme for #NRW2019 is 'Grounded in Truth – Walk Together with Courage', and focuses on learning, sharing and growing together.

NATIONAL RECONCILIATION WEEK 2019
27 MAY – 3 JUNE



To foster positive race relations, the relationship between Aboriginal and Torres Strait Islander people and the broader community must be grounded in a foundation of truth. Whether you're engaging in challenging conversations or unlearning and relearning what you know, this journey requires all of us to walk together with courage.

Learn more at
reconciliation.org.au
#NRW2019



Late Arrivals

We have a large number of students arriving late to school each day. If your child is late to school, it is a requirement of the school that you accompany your child to the office to get a late slip. I kindly ask that you do not drop them at the gate and then leave before accompanying them to the office.

Mungo

Our Year 6 Leadership team had the most incredible experience connecting with country at Lake Mungo in Week 2. Over the coming editions of our newsletter, they will share their experiences with you.



Bek Zadow
Principal

AWARD WINNERS



Gold Wren Card Award Winners Week 2 Term 2

K Blue No	K Purple Awards	1 Violet this
1/2 Sapphire week	2/3 Lavender due	4/5/6 Fuchsia to
4/5/6 Magenta Camp.		

AWARD WINNERS

Term 2 Week 2 – 9/5/2019

	RESILIENCE VALUES	RESILIENCE VALUES	
K Blue			
K Purple			
1 Violet			
1/2 Sapphire			
2/3 Lavender			
4/5/6 Fuchsia			
4/5/6 Magenta			

WHAT'S HAPPENING IN 1 / 2 SAPPHIRE



Using geoboards to make 2D shapes and investigate their properties.



Maths with
1/2 Sapphire



Making block towers to count by tens on and off the decade.



Friends of ten pyramid card game.



UPCOMING EVENTS

- 20 May – PC meeting 7pm

A BIG THANK YOU TO ALL THE VOLUNTEERS WHO HELPED SELL CAKES, SAUSAGES, BACON & EGGS & SUCCULENTS. ALSO TO ALL THE HELPERS WHO BAKED BEAUTIFUL HOMEMADE CUPCAKES, SLICES, AND BISCUITS, TO MAKE OUR ELECTION DAY BBQ A GREAT SUCCESS WITH OVER \$1000 PROFIT TO GO BACK TO HELPING THE SCHOOL.

Canteen news

**Canteen open every Monday, Wednesday, & Friday.
(If you can help please see Gina in the canteen)**

The garden club is selling their produce in the office check out the P&C facebook page when there is fresh produce grown in the school garden.

<https://www.facebook.com/rpspncevents>

Also check out this page for events that are happening around the school or P&C.

Oral Care Recycling Program



Our school has a chance to win a community garden through recycling!

Colgate, Chemist Warehouse and TerraCycle are thrilled to announce the launch of the Colgate Community Garden Challenge!

All pre-, primary and secondary schools are invited to join the Colgate Community Garden Challenge! Schools can start collecting oral care waste and online votes for their chance to win a recycled community garden set to grow their own veggie patch! Don't miss out – entries close 31 September 2019!

Our School, through the P&C, has registered for this great recycling program.

The P&C will run the program now until the competition ends on 31st September 2019. There will be a box in the playground for you to deposit your Oral Care recyclables.

Further information



During the competition period, schools will earn Garden Credits by sending oral care waste to TerraCycle for recycling, and by earning online votes from the community.

1 unit of oral care waste = 10 Garden Credits / 1 online vote = 1 Garden Credit

What you can recycle in this program

Any brand of used toothpaste tubes, toothbrushes, plastic toothbrush packaging, interdental brushes, wispis, pumps, stand up toothpaste bottles and any kind of non-electric toothbrush or toothpaste tube and all affiliated non-recyclable packaging. Please note: Electronic toothbrushes and electronic toothbrush parts are not recyclable through this program.

Earn votes from the community

Schools can earn additional Garden Credits through online votes from the community. Voting will be open from 23 March 2018 to 31 October 2019. Each vote will count as one (1) Garden Credit. To earn more online votes, spread the word about your participation using posters, social media and word-of-mouth!

What are you waiting for - get online Rydalmere and vote for our school –

<https://www.terracycle.com.au/en-AU/brigades/colgategarden>

Best practices for recycling

In order to recycle this waste stream properly, please make sure all excess product has been removed (i.e. leftover toothpaste or floss). To clean the toothpaste tubes cut them in half and wash the inside. Additionally, please note that it must be completely dry prior to depositing in our box for recycling.

This program accepts **any brand** of oral care waste.

Please leave in the box near kindy room.



We are excited to be taking part in the 2019 Woolworths Earn & Learn program.

During the previous campaign, we were able to purchase some great resources with the points we earned, thanks to you.

From now until **June 25th 2019**, you can collect stickers at Woolworths that go towards Earn & Learn points. For every \$10 you spend at Woolworths (excluding the purchase of tobacco, liquor and gift cards), you will receive a sticker. These stickers can then be given to your children to collect on a special sticker sheet. Once it is completed, they can simply bring it back here to school or you can drop them into your local Woolworths collection box.

The more points we earn, the more we can redeem from a choice of over 10,000 educational resources including mathematics and English resources, art & crafts materials and much, much more!

We are grateful for your support and look forward to a successful program. If you have any questions, please ask at School.



Return & Earn

****Where is the money going?

BACK INTO THE SUSTAINABLE PROGRAMS AT SCHOOL/ GARDEN CLUB.

**** You are asking yourself how can you help??

Ask you child to put their empty containers in the blue bin near the canteen.

*****What can be returned?

Quench bottles brought from the canteen, Juice poppers from canteen or home, Chocolate & strawberry milk cartons.

***** Where can you put your empty containers?

Little Blue Bin near canteen ALSO in your canteen basket after lunch.





Hello Everyone!!

Hope you are doing well.

We have been having a busy start with our programs. The information session by Ms. Gina, regulatory services of City of Parramatta was so helpful for all the participants. Followed by walking safely to school march from Rydalmere Wharf to the school on our walking bus was very enjoyable. A huge thanks to all those who participated. Asana, parent of our school reading a story of Thomas and his friends during our bubs and books program was like adding a cherry to the cake.



Next week in a glance:

Mondays: Playgroup

Tuesdays: Zumba

Wednesday: English Conversational classes for Adults

Thursday: Crafternoon (starting on 23rd May)

Friday: Bubs and books

Join us for one or all the programs. Just come to meet me at the hub for a cuppa. Please follow us on Facebook : Rydalmere Hub Leader for more updates.

For those whom I haven't met, I am Seetha, Community Hub Leader at Rydalmere Public School. I am a very good listener and interested in your wonderful stories... Come to the hub and let us have a chat.

Cheers,

Seetha.

WALKING SAFELY TO SCHOOL IN OUR WALKING BUS



Bubs and Books



STORY TIME AND CRAFTS FOR BUBS AND CARERS

Fridays 9:30am to 10:30am

Rydalmere Public School

All are welcome.

Register with seetha at 0412485919



Crafternoon

Wants **YOU** to do what **YOU** do
and maybe learn something **NEW!**

Come along for afternoon tea and a cappa while enjoying craft time with other local crafters.

All are welcome!



Bring what you are working on now or see what we have on hand...or both!

WHEN : Thursdays 1pm to 3pm

(Starting Thursday 23rd May)

WHERE : Rydalmere Public School Library (the Red building)

CONTACT: Seetha, Community Hub Leader 0412485919

Or Bec, at 0403995655

EMAIL : seethalakshmi@ssi.org.au

Zumba



Zumba sessions for ladies only

Tuesday 9:30am to 10:30am

Under the cola

Cost: 10\$ for 3 sessions (payable beginning of the first session)

Or

5\$ every session (payable when you attend a session)

Wear comfortable clothes and shoes.

Bring a bottle of water.

No need to register... Sign in when you arrive.

Contact Seetha 0412485919 for more information.



Free English Conversational classes

Wednesdays 9:30am to 11:30am.

Rydalmere Public School

Childminding available if registered.

Register with Seetha, 0412485919.



RYDALMERE PUBLIC SCHOOL

Playgroup

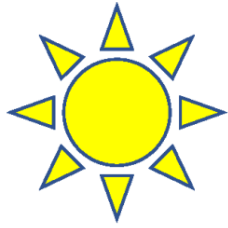
Mondays 9:30 am to 11:30 am

Where: In the hall

**Bring: Morning tea,
A Gold Coin Donation.**

**All are welcome.
Just sign in when you arrive.**





Veggie Garden Update

Feed Me Your Food Scrapes!

Thanks to a Woolworths Junior Landcare Grant, we now have compost bins and a worm farm! They will help us reduce landfill and create some yummy soil for the veggie garden. Feel free to add your food scrapes (fruit, veg & cereals ONLY) to the **FEED ME** bin behind the chicken coop.



What's Growing?

So much is growing in the veggie garden right now and we are currently harvesting rocket, spinach, carrots and tomatoes.



Beans



Spinach



Carrots



Lettuce and Rocket



Tomatoes



Oranges



Onions and Leeks



Beetroot



Strawberries



Zuchinnis



Pak Choy and Cabbage



Sunflowers



Blueberries



Peas



Passionfruit



Potatoes

FOAM BOXES NEEDED!

Do you happen to have a foam box that you don't need? We would LOVE for you to donate them to the veggie garden! We'll be growing strawberries and herbs in them. Thanks!



SCHOOL BANKING

School banking at Rydalmere Public School

Teaching generations of young Australians the importance of good saving habits since 1931.



It's amazing how quickly Term 1 went by and we're already well and truly into Term 2. The Commonwealth Bank of Australia has received some great feedback on this year's Polar Savers rewards and plenty of students have already redeemed their first reward for the year. My own son has been saving regularly with the goal of obtaining the Snowy Origami Set. Available in Term 2, we have two new reward items from our 2019 Polar Savers range for students to redeem: Yeti Fluffy Notebook and Icicle Slapband Ruler.



For those families who already participate, thank you for supporting the School Banking program at Rydalmere Public School. Thank you for helping the kids at our school develop a regular savings habit with School Banking.



*** Remember that banking day is MONDAY ***

For those families who would like to join, there are three options:

1. **Apply at school:** contact the school office for an application form, or contact Paula (banking co-ordinator) at paula.britz@gmail.com or 0420 668 020 for assistance.
2. **In Branch or by phone:** Ermington Branch, 9 – 11 Betty Cuthbert Ave, Ermington, NSW, 2115, or (02) 9684 4344
3. **Online:** If you have a Commonwealth Bank account you can apply via Netbank

For assistance with school banking, contact the school office, or Paula at paula.britz@gmail.com or 0420 668 020

COMING TO OUR SCHOOL

The Teeth On Wheels team
are coming to our school



Great News! Our school is pleased to announce that the Teeth on Wheels team will be coming out to our School every 6 months to provide Oral Health Education and quality dental treatment to our students.



Remember your forms!

Please keep your eye out for the consent form which can be filled out and handed back into the school reception for your child to be seen.



www.teethonwheels.com.au

 TeethOnWheelsAustralia  #teethonwheels

TeethOnWheels™
a positive dental experience

Young Parents Group

Health and Wellbeing Workshops

Come and join in, learn new skills and meet other young parents!

WHEN: Every Thursday starting 9th May 2019 for five weeks
(9th, 16th, 23rd, 30th May and 6th June)

TIME: 10:15am-12:30pm

WHERE: Parramatta Mission rooms: 6 Lincluden Place, Oatlands. 2117.

FREE

- Childcare for participants
- Morning Tea
- Giveaways
- Children's craft

WORKSHOP TOPICS

- ✚ Centrelink and your benefits
- ✚ First aid for babies and children
- ✚ Health and Nutrition
- ✚ Budgeting Tips
- ✚ Remembering self-care

Limited registrations available

Call or email to secure your spot

Pip Martins Phone 98983448

Email phillipa.martins@det.nsw.edu.au

OR

Sharlene Pasqual Phone 0439 978 721

Email sharlene.pasqual@parramattamission.org.au

Organisations proudly partnering:

