

Friday 8 May, 2020

## **PROCEDURES TO ENSURE SAFETY OF ALL DURING PHASE ONE – STAGGERED RETURN TO SCHOOL**

Dear Parents and Carers,

Please be advised of the following procedures we are implementing to ensure the safety of all during Phase One of the staggered return to school. These may seem harsh, but is important we get it right. As soon as it is safe, we will ease these restrictions. I will communicate this ASAP.

### **BEFORE SCHOOL:**

- No parent access to the school grounds – please drop your child at the canteen gate.
- Do not drop your child before 8:30am (unless they are accessing Before School Care).
- Parents – please do not gather at the gate. Also be mindful of social distancing while you drop your child off.

### **AFTER SCHOOL:**

- No parent access to the school grounds – please pick your child up at the canteen gate.
- Staff will bring your children to the Canteen gate from 2:55pm. This is to slightly stagger the pick-up so we adhere to social distancing rules.
- Staff will release your child to you.
- Children who walk home unaccompanied will be allowed to leave at 3pm.
- Children who go to After School Care will be collected by Squiggler staff.

### **PRESCHOOL DROP OFF AND PICK UP:**

- Sign-in will occur at the preschool gate.
- Parents will not be able to access the preschool grounds.
- Preschool parents must enter and exit the school via the canteen gate.
- Preschool parents must leave the grounds immediately after sign-in or sign-out.

Please see the poster attached which explains these rules simply. This poster will also be visible on the school gates. I thank you for your help and understating with managing these procedures. We really can't do it without your help, so thank you 😊

Thanks,

**Bek Zadow**  
Principal



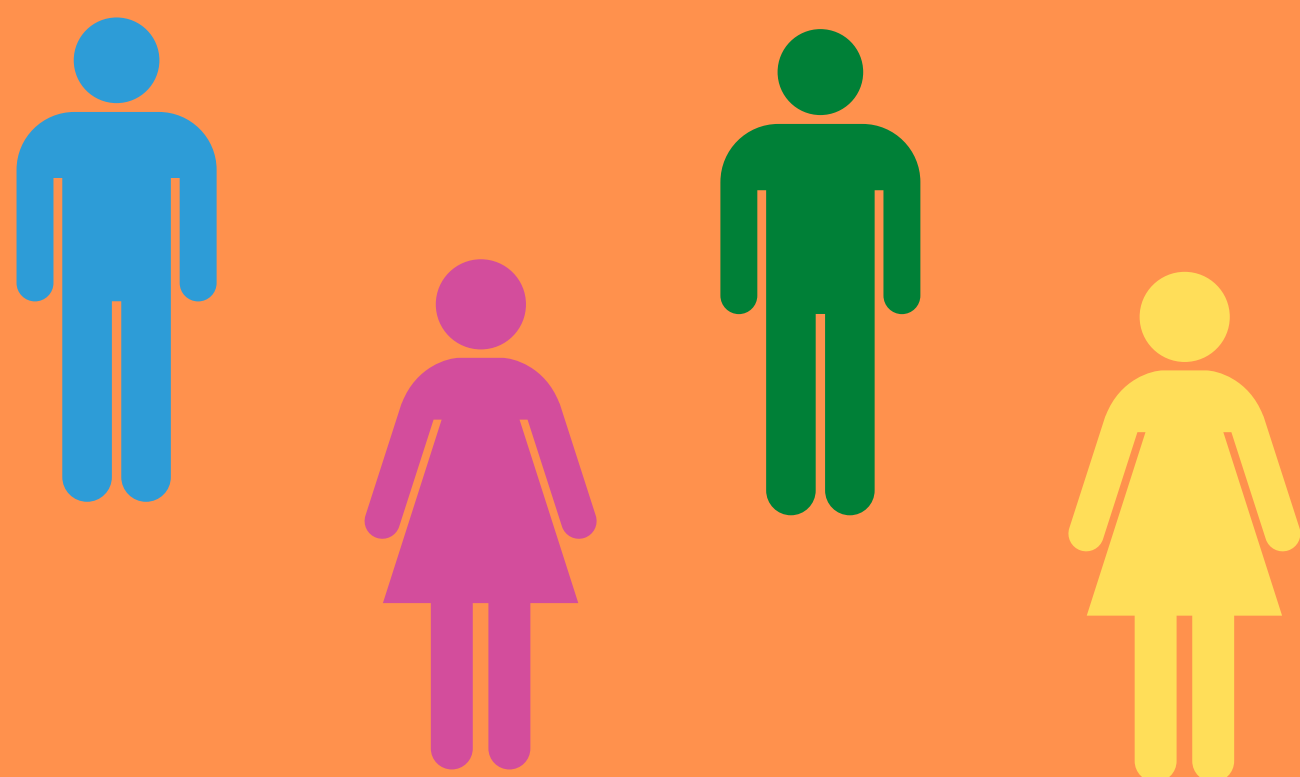
**FROM 11TH MAY**

# Phase One Gate Rules



**NO PARENT ACCESS**

**SOCIAL DISTANCING AT GATES**



**NO STUDENT ENTRY BEFORE 8:30AM**

**ENTRY AND EXIT VIA CANTEEN GATE ONLY**

