

Thursday 21 May, 2020

PROCEDURES TO ENSURE SAFETY OF ALL DURING: PHASE THREE RETURN TO SCHOOL

Dear Parents and Carers,

Please be advised of the following procedures we are implementing to ensure the safety of all during Phase Three return to school. These continue to be harsh, but is important we get it right. As soon as it is safe, we will ease these restrictions. I will communicate this ASAP.

BEFORE SCHOOL:

- No parent access to the school grounds – please drop your child at the specified gate (see attachment).
- Do not drop your child before 8:30am (unless they are accessing Before School Care).
- Parents – please do not gather at the gate. Also be mindful of social distancing while you drop your child off.

AFTER SCHOOL:

- No parent access to the school grounds – please pick your child up at the specified gate (see attachment).
- Staff will bring your children to the gates from 2:55pm. This is to slightly stagger the pick-up so we adhere to social distancing rules.
- Staff will release your child to you.
- Children who walk home unaccompanied will be allowed to leave at 3pm.
- Children who go to After School Care will be collected by Squiggler staff.

PRESCHOOL DROP OFF AND PICK UP:

- Sign-in will occur at the preschool gate.
- Parents will not be able to access the preschool grounds.
- Preschool parents must enter and exit the school via the canteen gate and must not do this before 8:55am. If you arrive before this time, you will be asked to wait.
- Preschool parents must leave the grounds immediately after sign-in or sign-out.

Please see the poster attached which explains these rules simply. This poster will also be visible on the school gates. I thank you for your help and understating with managing these procedures. We really can't do it without your help, so thank you 😊

Thanks,

Beќ Zadow

Principal

Phase 3 – Gate Entry and Exit Points

Back Gate (Elonera St)		Front Gate (Victoria Rd)		Pedestrian Gate (John St)		Canteen Gate (John St)	
Omar	KB	Maverick	KB	Hendrix	KB	Elijah	KB
Celine	KB	Louie	KB	Mitchell	KB	Alice	KP
Anesi	KB	Derrick	KB	Dylan	KB	Avan	KP
Malik M	KB	Linda	KB	Ava	KB	Maxine	1V
Liam	KB	Thomas	KP	Zoe	KB	Marcus	1V
Amanullah	KP	Ben	KP	Malik D	KP	Yahya	1V
Sonny	KP	Jarrah	KP	Eva	KP	Khalid	1V
Omer	KP	Farishta	1V	Aaron	KP	Jake	1/2S
Hayley	KP	Lasya	1/2S	Ali	1V	Amirali	1/2S
Jeremiah	KP	Mustafa	1/2S	Sophie	1V	Sherilyn	1/2S
Bailey	KP	Paul	1/2S	Eli	1V	Aleyah	1/2S
Giuliana	1V	Lily	1/2S	Alexander	1V	Nouha	1/2S
Farzad	1V	Hana	1/2S	Sana	1V	Edward	1/2S
James	1V	Sayed	2/3L	Brooke	1V	Elina	1/2S
Charlie	1V	Philip	2/3L	Ethan	1V	Aisha	1/2S
Daniel	1/2S	Maddy	2/3L	Harris	1V	Olivia	2/3L
Aaliyah	1/2S	Oliver	2/3L	Storm	1V	Sakchyam	2/3L
Ethan	1/2S	Bonnie	2/3L	May	1V	Samantha	2/3L
Larisa	2/3L	Kate	3/4B	Thomas	1/2S	Jaxen	2/3L
Abideen	2/3L	Michael	3/4B	Mia	1/2S	William	2/3L
Sasha	2/3L	Anabella	3/4B	Aydin	1/2S	Milad	2/3L
Leron	2/3L	Chris	3/4B	Kaiden	1/2S	Alina	2/3L
Diyar	2/3L	Nakita	3/4B	Mikhail	1/2S	Zoe	2/3L
Jaanya	2/3L	Aliesha	3/4B	Nate	1/2S	Nicholas	2/3L
Aliyah	2/3L	Sam	3/4B	Abdulla	2/3L	Jude	2/3L
Josh	3/4B	Eli	5/6R	Kelcey	3/4B	Daniel	2/3L
Geordie	3/4B	James	5/6R	Cameron	3/4B	Mitchell	2/3L
Razvan	3/4B	Yusra	5/6R	Jai	5/6R	Antonio	3/4B
Vida	3/4B	Aamir	5/6R	Leo	5/6R	Ayla	3/4B
Jasnoor	3/4B	Imran	5/6R	Rishabh	5/6R	William	3/4B
Tobias	3/4B	Maria	5/6R	Campbell	5/6R	Hanin	3/4B
Ella	3/4B			Alexis	5/6R	Jed	3/4B
Mannya	3/4B			Gabriel	5/6R	Sophia	3/4B
Faez	5/6R			Tairell	5/6R	Matthew	3/4B
Malik	5/6R			Cynthia	5/6R	Yusuf	3/4B
Angel	5/6R			Cooper	5/6R	Luke	5/6R
Amalia	5/6R					Isaac	5/6R
						Mahdi	5/6R
						August	5/6R
						Jack	5/6R
						Tyler	5/6R
						Laila	5/6R
						Alharith	5/6R
						Atia	5/6R
						Lucas	5/6R
						Zain	5/6R
						Clayton	5/6R
						Laily	5/6R



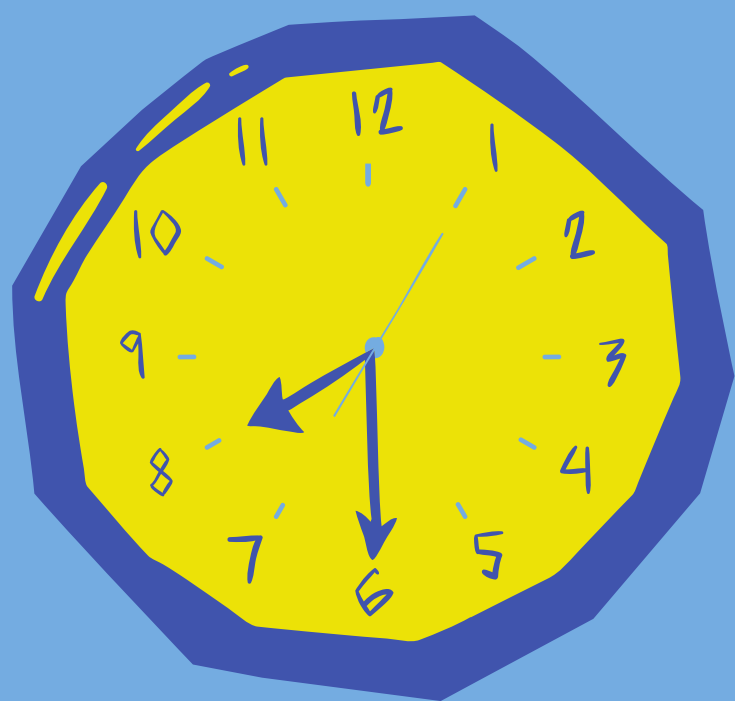
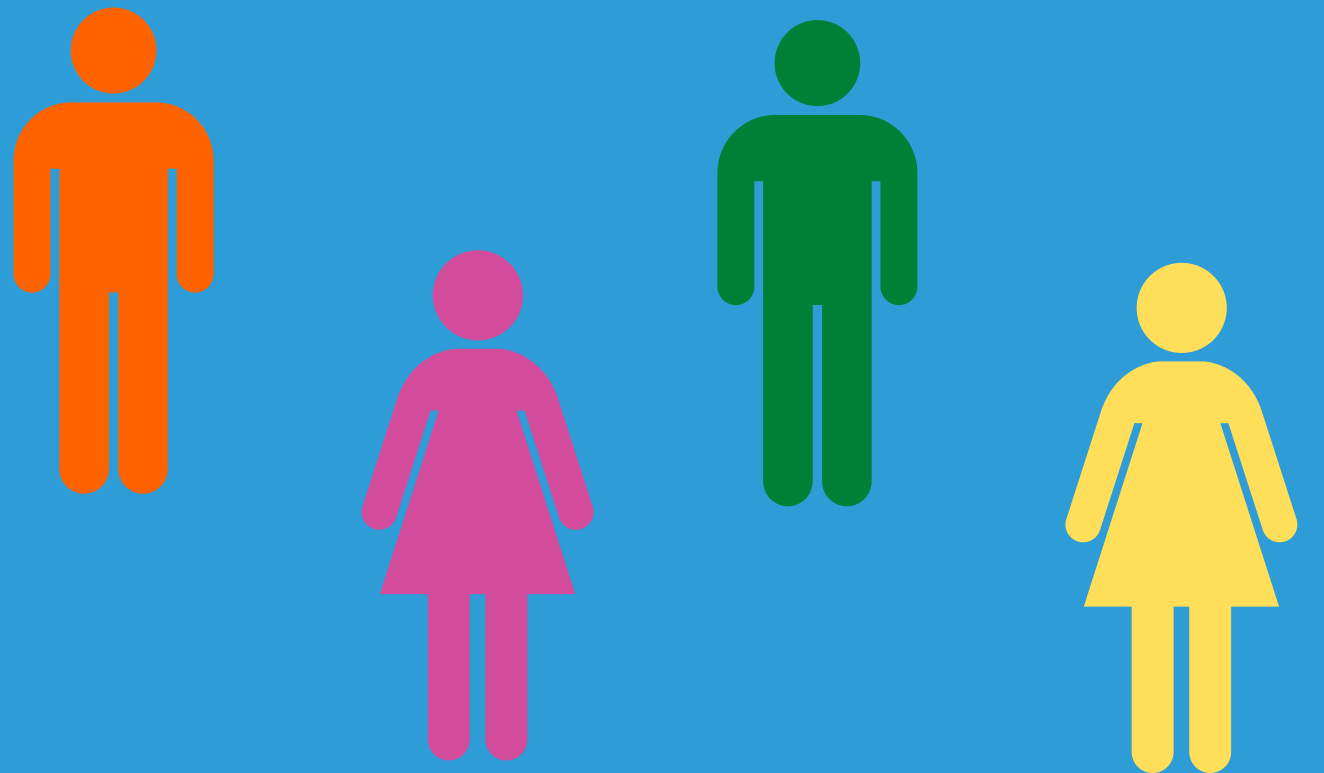
**FROM 25TH
MAY**

Phase Three Gate Rules



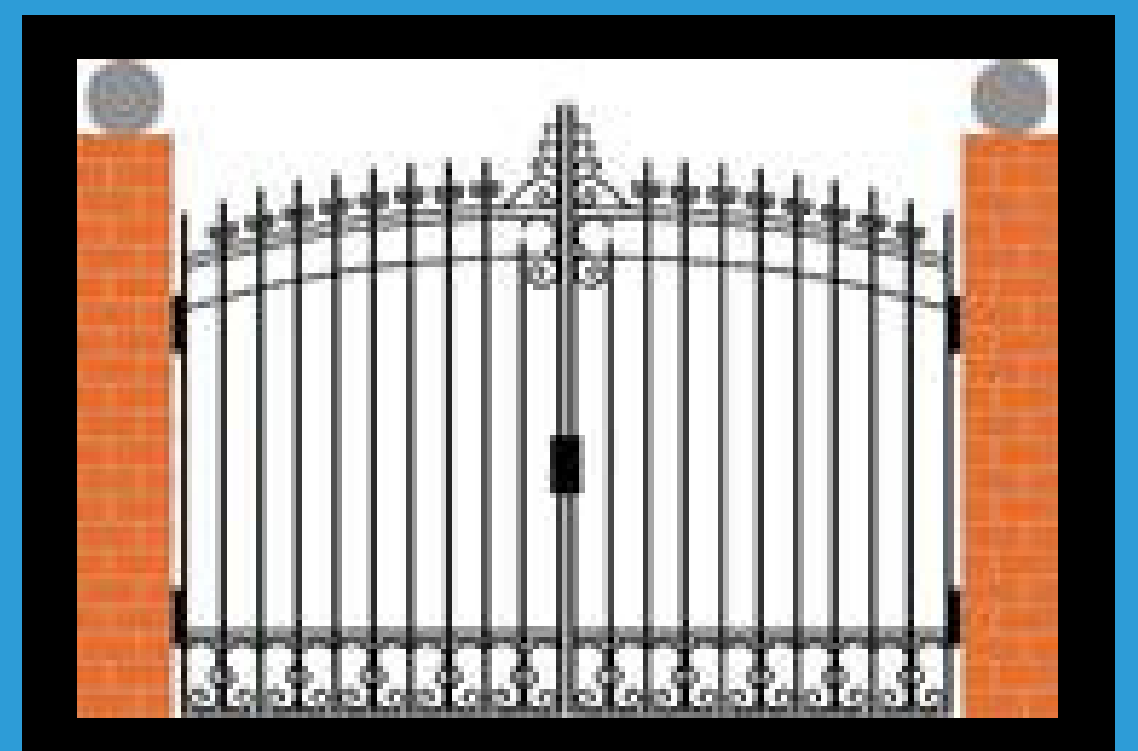
**NO PARENT
ACCESS**

**SOCIAL
DISTANCING
AT GATES**



**NO STUDENT
ENTRY BEFORE
8:30AM**

**ENTRY AND EXIT
VIA SPECIFIED
GATE ONLY**



A guide to NSW school students returning to face-to-face learning

This guide is for parents and carers

Information has been updated as at 19 May 2020, until further notice.

Schools are safe and open for full time face-to-face learning

All schools are returning to full on-campus learning from Monday 25 May. All school activities and operations will be in line with Australian Health Protection Principal Committee (AHPPC) and NSW Health guidelines as applicable.

School students do not need to follow physical distancing guidelines, but should follow good hygiene practices like:

- Regularly washing hands
- Avoiding sharing drinks or food
- Coughing or sneezing into your elbow, or a tissue which should be discarded immediately.

School attendance

All students should be at school unless:

- They have a medical certificate which states that they are unable to return to school due to an ongoing medical condition
- They are currently unwell.

Students who have a medical certificate to stay at home will be supported to learn from home in line with regular procedures if they are able to. These regular procedures are different to what was offered during the learning from home period. If you require work to be provided to your child whilst they are at home due to an underlying health condition, you should contact the school for assistance.

Please note, students who live with a family member in one of the categories identified as being at increased risk by the AHPPC, should attend school unless a medical practitioner advises otherwise in writing.

If your child is unwell, do not send them to school. If they are unwell at school you or your nominated emergency contact will need to collect them immediately. Please make sure your contact details are up to date.

If a student is absent without a medical reason for more than three days, this will be recorded as an unauthorised absence and followed up by the school.

If you need any support to get your child back to school, please contact your school.

Reporting and assessment

Your child has been assessed during the learning from home period and will receive additional assessment on their return to school.

You will receive your child's semester 1 report before the end of August (week 6, Term 3).

This may be a simplified version of the report you normally receive. Schools are encouraged to discuss your child's progress with you before the written report is issued.

School activities

Teachers will continue to follow the same school curriculum with the exception of some activities that can't go ahead for now.

What children can do:

- Use the school library
- Engage in non-contact sporting activities
- Year 11 and 12 students may attend classes/activities relating to subjects available on other campuses
- VET work placement for Year 12 students is able to proceed from 1 June 2020. Year 10 and 11 work-placement is able to proceed from Term 3 2020.
- School based apprenticeships and traineeships can recommence once the relevant workplaces are back in operation
- Trade Training Centres can operate on school sites.

What students can't do:

- School assemblies (unless for critical information)
- School incursions and excursions including camps
- Work experience
- Inter-school activities (debating, inter-school sport)
- In-school activities requiring parent or other volunteers
- Use hydrotherapy pools
- Drink from a water bubbler – bring a water bottle instead
- Students cannot attend TAFE for study but may continue to learn online.

School cleaning and hygiene supplies

Your school will receive additional cleaning in line with the AHPPC guidelines and advice from NSW Health. Targeted areas include high-touch areas and other hard surfaces, door handles, lockers, light switches and handrails in stairways and movement areas. There will also be additional cleaning of toilets and bubblers and topping up of supplies like soap.

Your school has received supplies of soap, hand sanitiser, toilet paper, paper towels, disinfectant wipes and personal protective equipment. The school is able to order more as needed.

School grounds

There should be no visitors to school sites unless they are essential. Your school can provide guidance as to who is considered essential.

Your school will provide advice on drop off and pick up procedures.

Wherever possible, P&C and parent/carer/teacher meetings should be conducted virtually.

Canteens and uniform shops can open at the discretion of the principal.

Out of school hours care can continue to operate.

Community use of school facilities will recommence only for uses that are necessary for continuation of education and with principal's approval.

Responding to COVID-19 cases

There is a clear plan in place for schools to respond to any suspected or confirmed cases of COVID-19 in our schools. We are working closely with NSW Health and will communicate with parents if a situation was to arise